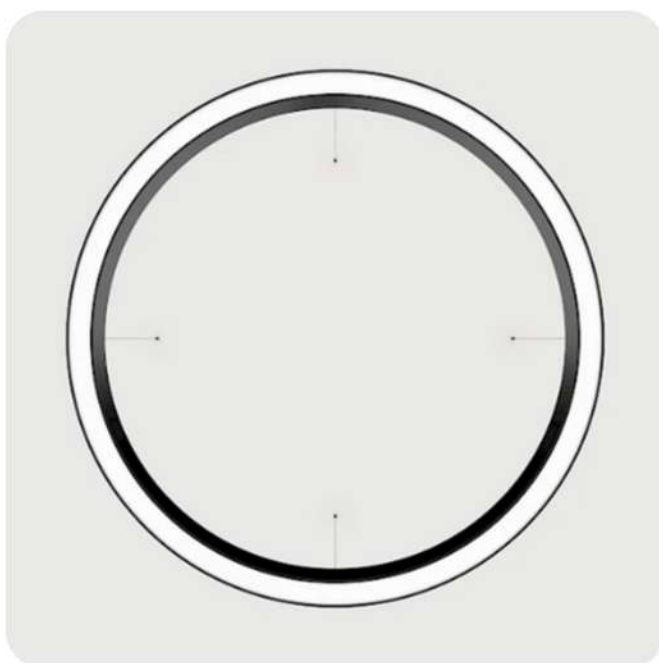


Treatment room lighting

# CIRCLE DENT

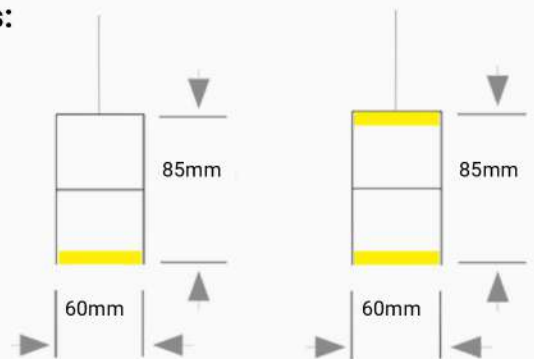


# TECHNICAL DATA

<b>V</b>	220-240
<b>Hz</b>	50-60
<b>W</b>	128
<b>Lm</b>	12264
<b>K</b>	5000
<b>CRI</b>	> 90 (typ. 93)
<b>kg</b>	12,2

<b>Material:</b>	Aluminum
<b>Insert:</b>	Treatment room
<b>Dimming:</b>	not dimmable / Casambi / DALI / Touch Dim
<b>Lifetime:</b>	50.000h
<b>Warranty:</b>	2 years
<b>LED cover:</b>	viscous opal cover
<b>Canopy connection:</b>	Color: matching the luminaire surface
<b>Color:</b>	White, silver, black
<b>Diameter Ø:</b>	1200 mm

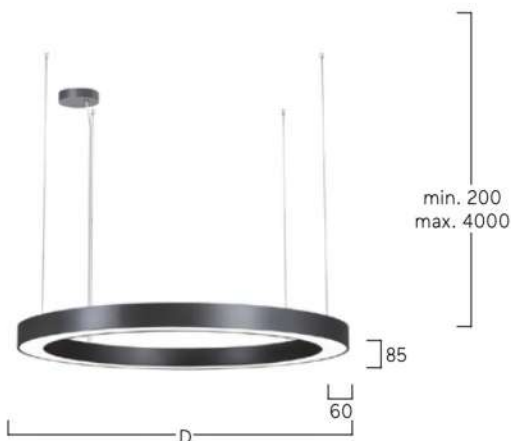
## Profile dimensions:



Parallel Suspension

Central Suspension

Disc Suspension



# ARTICLE NUMBERS

Color	ON/OFF	Touch Dim
silver	RP3ASE-950M-D1200	RP3ASH-950M-D1200
black	RP3ABE-950M-D1200	RP3ABH-950M-D1200
white	RP3AWE-950M-D1200	RP3AWH-950M-D1200

Color	DALI	Casambi
silver	RP3ASL-950M-D1200	RP3ASC-950M-D1200
black	RP3ABL-950M-D1200	RP3ABC-950M-D1200
white	RP3AWL-950M-D1200	RP3AWC-950M-D1200

## OPTIONAL

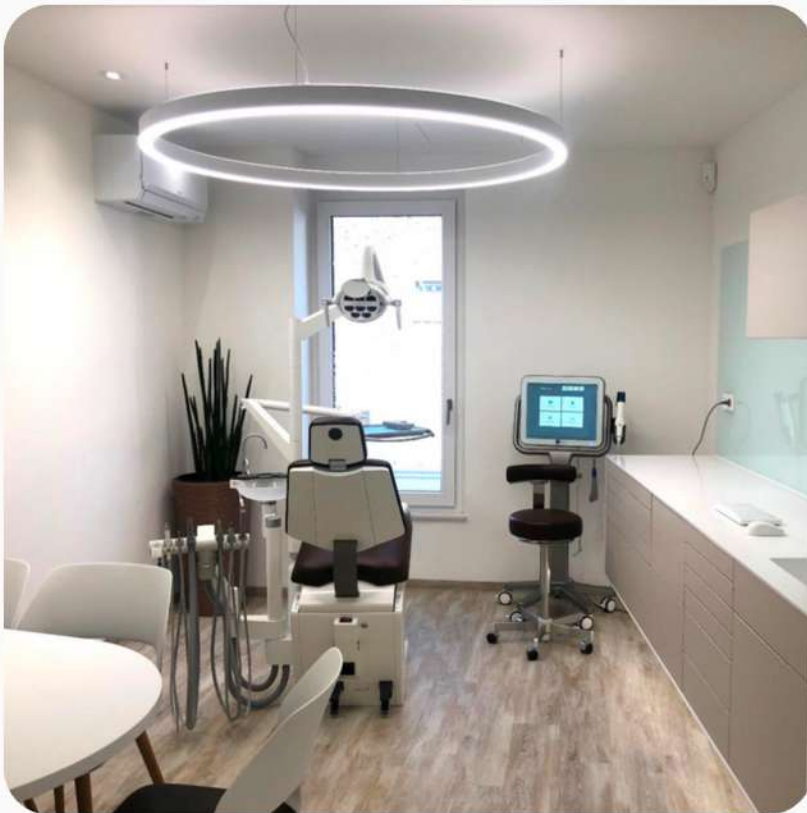
Casambi wall switch



**Color:** White / Black  
**Size:** 90 x 90 x 12 mm  
**Range:** Up to 60 meters outdoors  
**Battery:** CR2430 lithium button cell battery (2-5 years service life, depending on use)

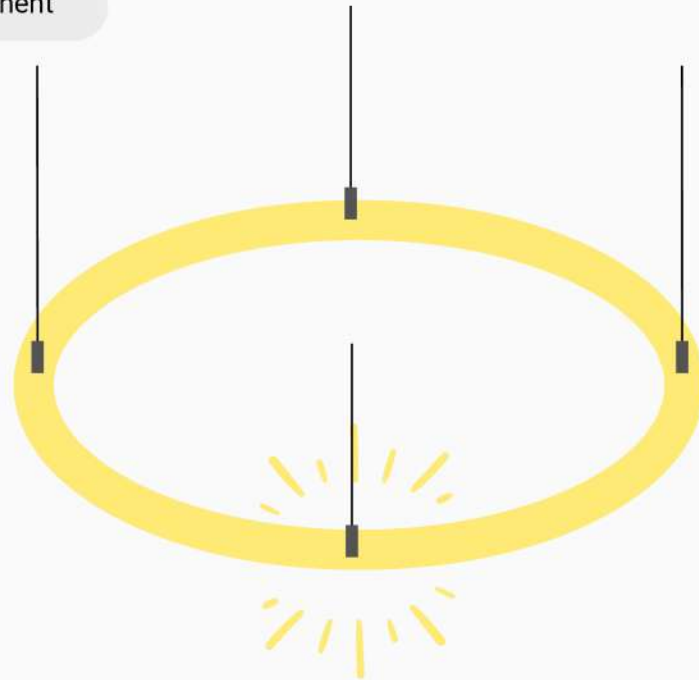
# HIGHLIGHTS

- ✓ No color location shifts when dimming the LEDs
- ✓ No UV and infrared components in the light spectrum (prevents premature hardening of plastics, for example)
- ✓ With a mounting height of 2.30 m, the lighting requirements of a treatment room are ideally met
- ✓ Extremely bright with large-area illumination thanks to optional indirect light component - luminous flux 12264 lumens



# OPTIONAL

Indirect lighting component



- ✓ Brightening of a high room (approx. 3m) through additional indirect light component with upward light distribution
- ✓ Avoidance of the cave effect, more pleasant room feeling due to ceiling brightening

Zum Weiherlein 16  
97509 Kolitzheim  
Germany

Sales: +49(0)15128033591  
info@rmd-leuchten.de  
www.rmd-leuchten.de

