

Practice lights

# TWIN DENT




SKU: 5595496957 (nonDIM)

without indirect light component / not dimmable\*

SKU: 5595496957-ID (mit ID)

with indirect light component / not dimmable\*

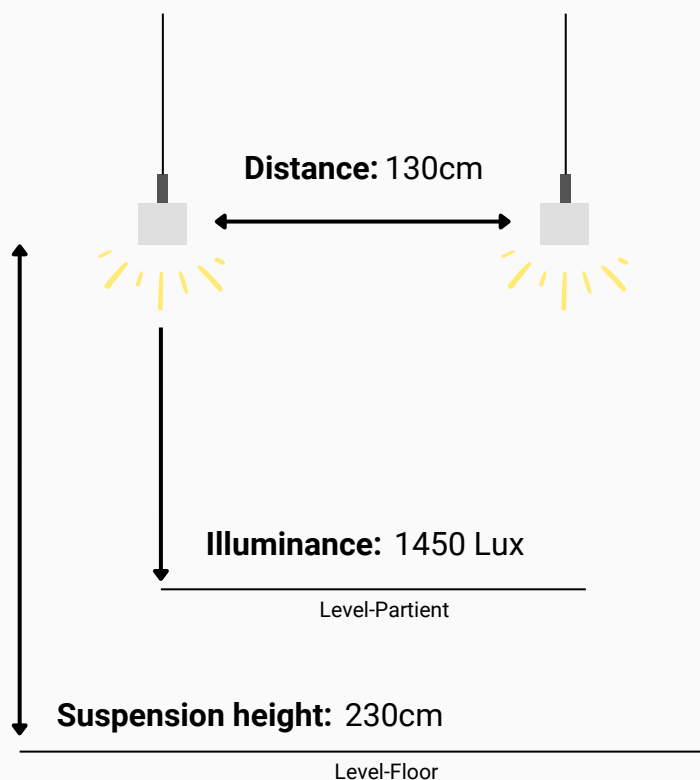
 RAL 9006 /silver

*\* on request with Casambi control unit (see optional)*

# TECHNICAL DATA

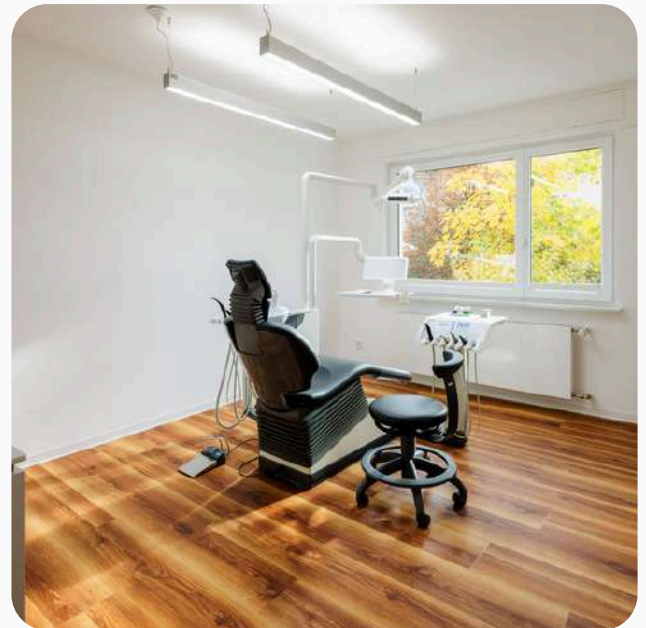
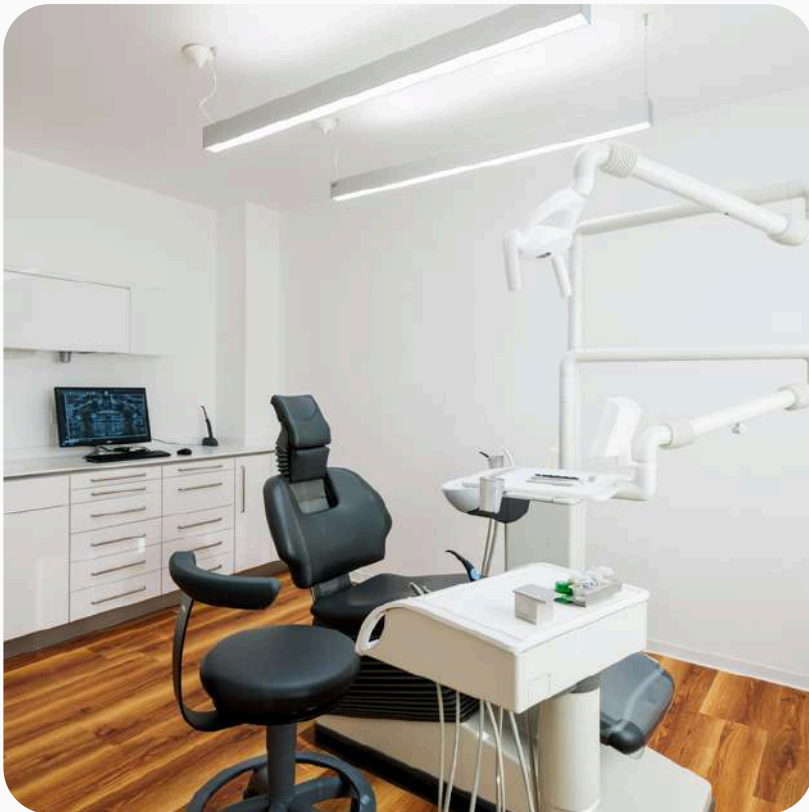
**V** 220-240  
**Hz** 50-60  
**W** 26 (ID) / 54 each  
**K** 5700  
**Lux** depending on  
suspension height  
**CRI** > 95 (typ. 97)  
**kg** 3.9 kg each  
**RG** 0

**Material:** extruded aluminum  
**Insert:** Treatment room dental practice  
**Dimming:** optional (nonDim; DIM 1-100%)  
**Indirect light component:** optional (70% direct / 30% indirect) with 90° beam angle; without indirect light component  
**Service life:** 50.000h  
**Warranty:** 2 years  
**LED cover:** Microprismatic lens/plus additional high-tech diffuser foil  
**Mains connection:** Luster terminals in the right canopy  
**Color:** silver  
**Dimensions:** 1435 x 60 x 79 mm (LxWxH)  
**Scope of delivery** 2 x pendant light incl. steel cable



# HIGHLIGHTS

- ✓ best colour rendering of CRI > 97
- ✓ No UV and infrared components in the light spectrum (prevents premature hardening of plastics, for example)
- ✓ With a mounting height of 2.30 m, the lighting requirements of a treatment room are ideally met
- ✓ Extremely bright with large-area illumination thanks to optional indirect light component - at least 1000 lux around the oral cavity at a suspension height of 2.30 m



# OPTIONAL

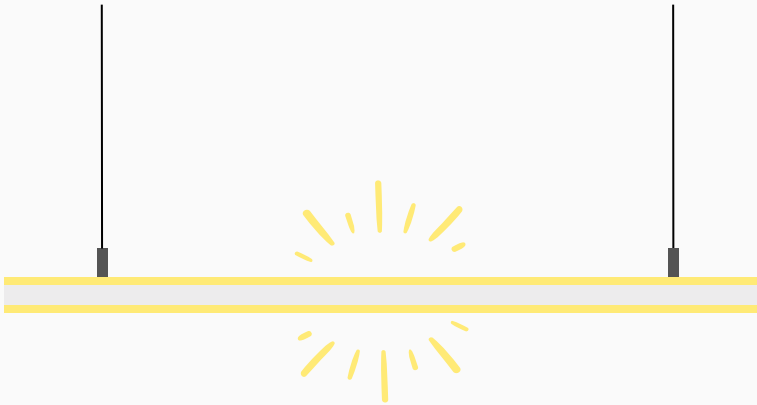
## Casambi wall switch

*\* on request*



**Colour:** White / black  
**Size:** 90 x 90 x 12 mm  
**Range:** Up to 60 metres outdoors  
**Battery:** CR2430 lithium button cell battery (2-5 years service life, depending on use)

## Indirect light component



**W** 17  
**K** 5700  
**CRI** > 95 (typ. 97)

- ✓ Brightening of a high room (approx. 3m) through additional indirect light component with upward light emission
- ✓ Avoidance of the cave effect, more pleasant room feeling due to ceiling brightening

Zum Weiherlein 16  
97509 Kolitzheim  
Germany

Sales: +49(0)15128033591  
info@rmd-leuchten.de  
www.rmd-leuchten.de

