

Pendant lights

SLIM LINE P48

Steel cable suspension
individually shortenable



SKU: 589-48.96sd

Drawbar suspension
50 - 150cm (height adjustable)



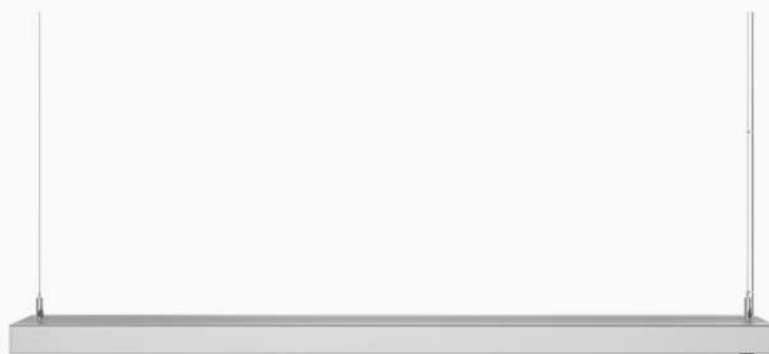
SKU: 589-48.95sd

● RAL 9006 /silver

TECHNICAL DATA

V	220-240
Hz	50-60
W	48 / 96
Lm	6120
K	5700
Lux	6800 (50cm)
CRI	> 95 (typ. 97)
kg	3,0 / 5,4
RG	0

Material:	Extruded aluminium
Insert:	Single / double workstation
Dimming:	Push-button (ON/OFF/DIM) / 1-100%
Lifetime:	50.000h
Warranty:	2 years
LED Cover:	Microprismatic lens/plus additional high-tech diffuser foil
Power connection:	luster terminals in right canopy
LED Driver:	Tridonic
Colour:	Silver
Dimensions:	930 x 111 x 35,5 mm (LxWxH) 1950 x 111 x 35,5 mm (LxWxH)

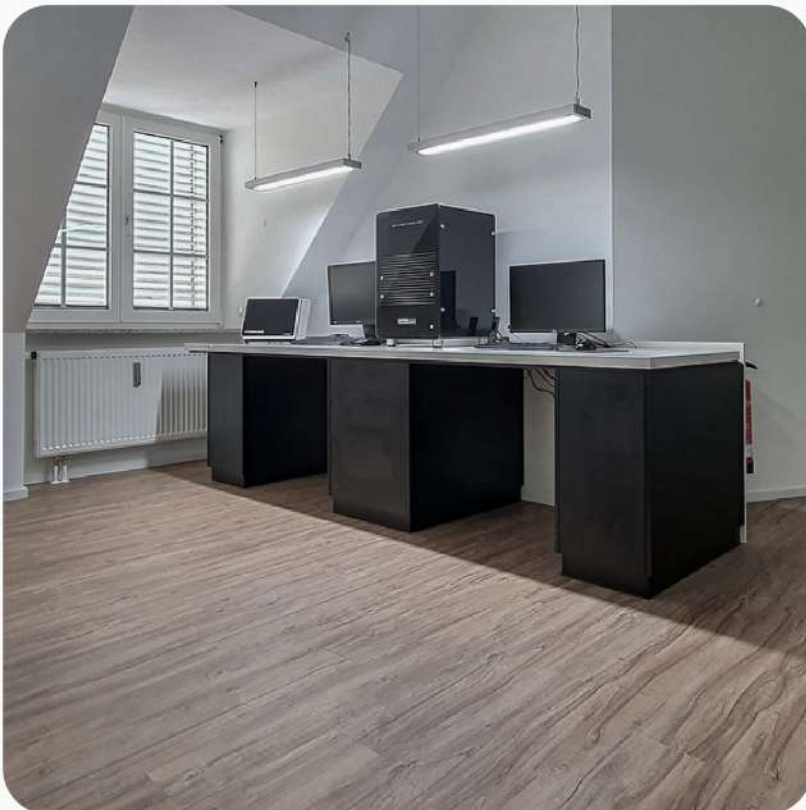


Distance:	Illuminance:
80 cm	3500 Lux
70 cm	4250 Lux
60 cm	5400 Lux
50 cm	6800 Lux

Work surface

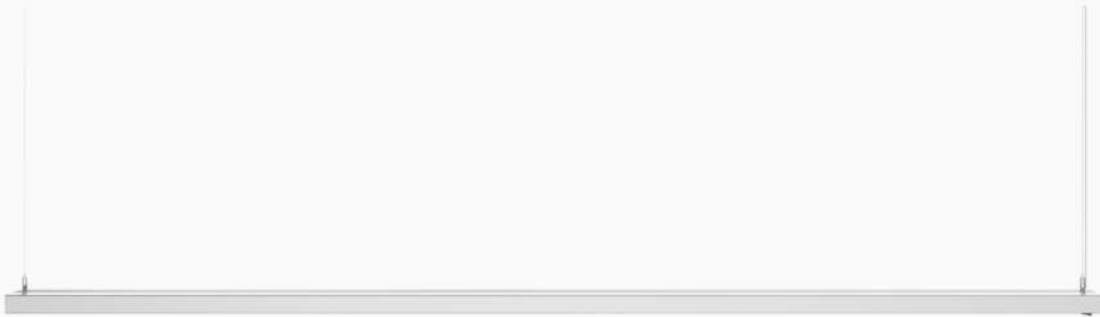
HIGHLIGHTS

- ✓ No colour location shifts when dimming the LEDs
- ✓ No UV and infrared components in the light spectrum (prevents e.g. premature hardening of plastics)
- ✓ No heat load in the direction of light emission - only slight heating of the luminaire surface
- ✓ Extremely bright with simultaneous large-area illumination thanks to two parallel LED chambers - up to 6800lx illuminance at a distance of 50 cm
- ✓ Optical design package: also available with filigree steel cable suspensions and transparent insulated supply cable (not infinitely height-adjustable)



OPTIONAL

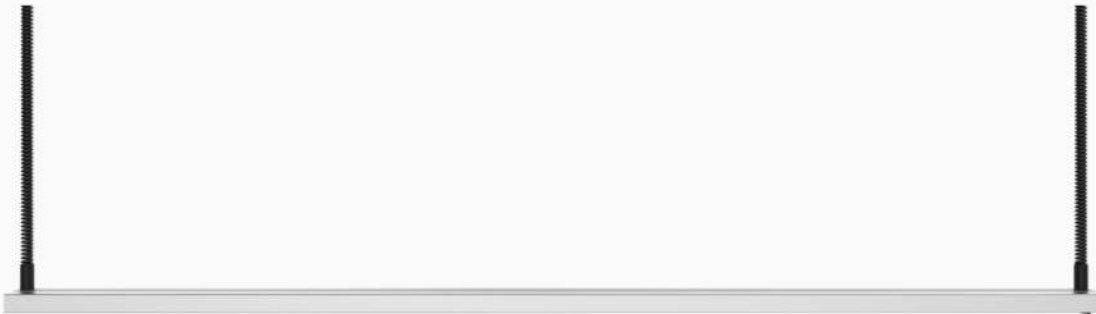
Double workplace



Dimension: 1950 x 111 x 35.5 mm (LxWxH)

Suspension: Steel cable

SKU: 589-96.96sd (with steel cable)



Dimension: 1950 x 111 x 35.5 mm (LxWxH)

Suspension: Drawbar suspension

SKU: 589-96.95sd (with drawbar)

Zum Weiherlein 16
97509 Kolitzheim
Germany

Sales: +49(0)15128033591
info@rmd-leuchten.de
www.rmd-leuchten.de

