

Articulated Lamps

# STANDARD LINE



SKU: 289-2497sd (24W/Dim\*)

SKU: 289-2497 (24W/nonDIM\*\*)



SKU: 289-1297sd (12W/DIM\*)

SKU: 289-1297 (12W/nonDIM\*\*)

● RAL 9006 /silver

\* DIM = dimmable

\*\* nonDIM = not dimmable

# TECHNICAL DATA

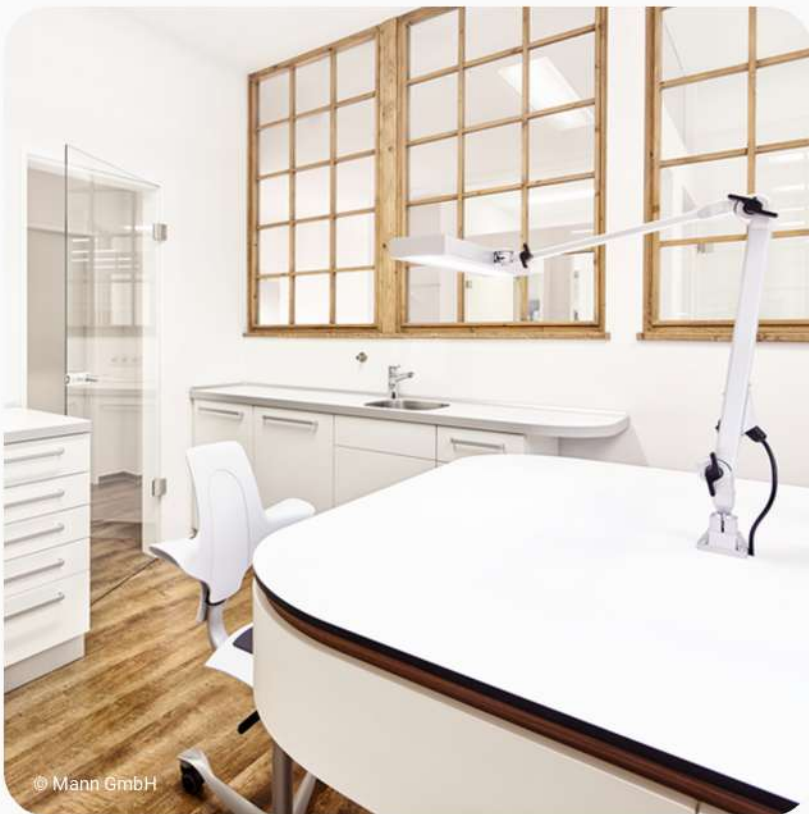
<b>V</b>	220-240
<b>Hz</b>	50-60
<b>W</b>	12 / 24
<b>Lm</b>	2000 / 4000
<b>K</b>	5000
<b>Lux</b>	3800 / 5900 (40cm)
<b>CRI</b>	> 80 (typ. 83)
<b>kg</b>	3,1 / 3,5
<b>RG</b>	0

<b>Body:</b>	natural-anodised aluminium
<b>Articulation type:</b>	spring-supported articulated arm in the middle and ankle joint
<b>Dimming:</b>	optionally (nonDim/DIM 1-100%)
<b>Lifetime:</b>	50.000h
<b>Warranty:</b>	2 Years
<b>LED Cover:</b>	Microprismatic lens/plus additional high-tech diffuser film
<b>Power connection:</b>	2m PVC-Cable + Schuko plug
<b>LED Driver:</b>	Tridonic
<b>Colour:</b>	Silver
<b>Dimensions light head:</b>	<b>12W:</b> 350 x 111 x 35,5 mm (LxWxH) <b>24W:</b> 585 x 111 x 35,5 mm (LxWxH)



# HIGHLIGHTS

- ✓ No colour location shifts when dimming the LEDs
- ✓ No UV and infrared components in the light spectrum (prevents e.g. premature hardening of plastics)
- ✓ No heat load in the direction of light emission - only slight heating of the luminaire head
- ✓ Homogeneous, large-area light due to single-row arrangement of LED modules
- ✓ Compact and robust luminaire housing with a spring-supported articulated arm in the middle and foot joint / 3-D joint on the luminaire head with large adjustment range



# ATTACHMENTS

For all variants (12 & 24 W)



Screw-on flange (incl.)  
SKU: 00595



Table clamp 0-44 mm  
SKU: 00395



Table clamp 16-85 mm  
SKU: 00495



Tabel base 10,5 kg  
SKU: 31796



Wall angle  
SKU: 00295

Zum Weiherlein 16  
97509 Kolitzheim  
Germany

Sales: +49(0)15128033591  
info@rmd-leuchten.de  
www.rmd-leuchten.de

